



UiLED TECHNOLOGY

Be GOOD People, Do GOOD Work!

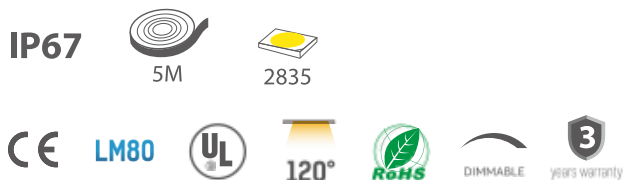


We are committed to deliver high quality,
cost-effective, energy saving LED products for the global market.

Top View Series 1010 14W 24V Neon Strip

Product No.: FN180S-14W24-1010

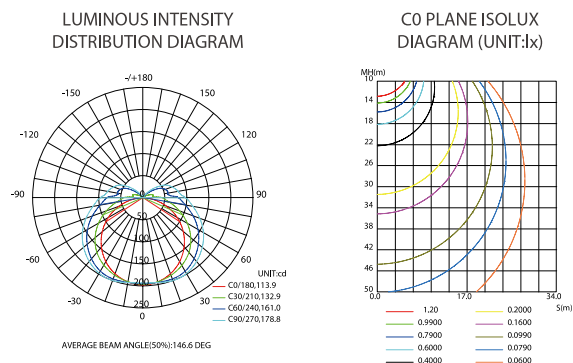
- Extrusion process, lights soft and uniform;
- IP67 protection, easy-to install and convenient connection;



TECHNICAL DETAILS

Product No.	FN180S-14W24-1010
Power	14W/M 4.26W/ft
Voltage	DC24V
CRI	90
Led Qty	180LEDs/M
Length/Reel	5M
Working Temperature	-25~60°C
Storage Temperature	-30~80°C
Voltage Range	23 ~25V dc
Reverse Voltage	25V dc

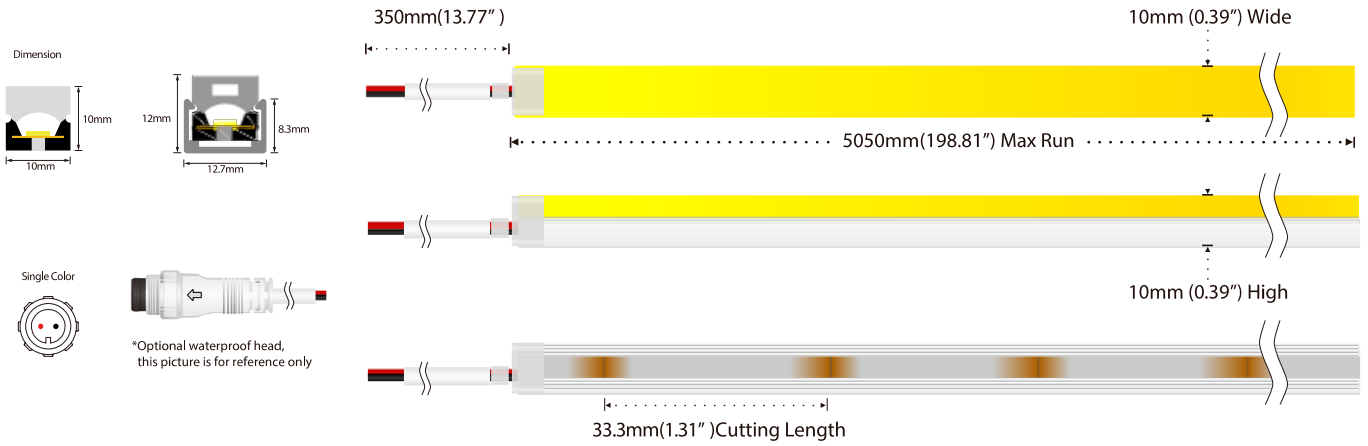
LIGHT DISTRIBUTION



LUMENS PER METER

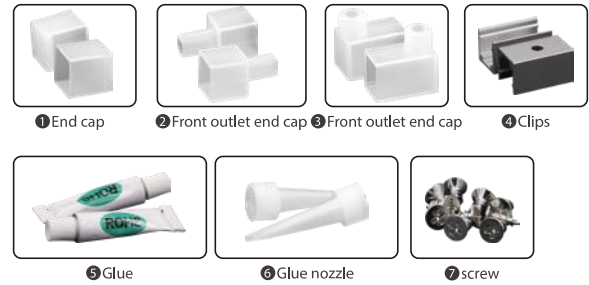
Color Temperature	
2700K	1000lm
3000K	1030lm
4000K	1060lm
6000K	1060lm

DIMENSION



ACCESSORIES SPECIFICATION

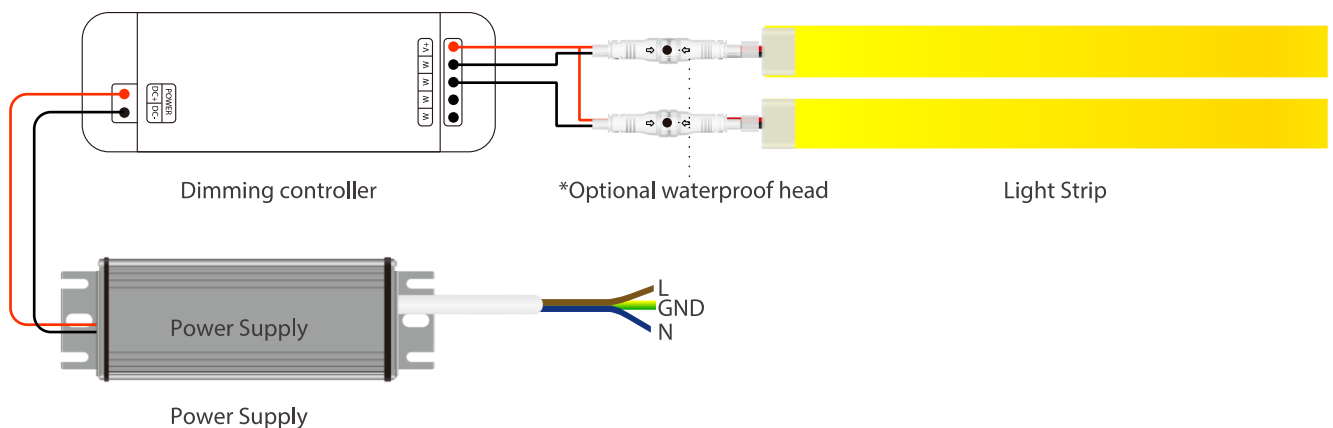
Name	Quantity	Note
① End cap	4pc	
② Front outlet end cap	2pc	
③ Front outlet end cap	-	*Optional
④ Clips	10pc	
⑤ Glue	2pc	
⑥ glue nozzle	2pc	
⑦ screw	10pc	



ALUMINUM PROFILE LIST

Product NO.	Section diagram	install
12.7×12mm		

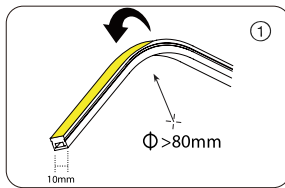
POWER CONNECTION DIAGRAM



RECOMMENDED POWER SUPPLIES

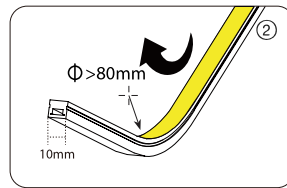
Item Number	Description	Input Voltage	Output Voltage	Dimmable	Dimensions
DVH75-24-P7-G1LS AL	Waterproof Driver 75W	220-240	DC24V 3.12A	NO	165×60×36.5
DVH100-24-P7-G1 LS AL	Waterproof Driver 100W	220-240	DC24V 4.16A	NO	167×60×34.6
DVH150-24-P7-G1 LS AL	Waterproof Driver 150W	220-240	DC24V 6.25A	NO	167×60×34.6
DVH200-24-P7-G1LS AL	Waterproof Driver 200W	220-240	DC24V 8.33A	NO	216×65×39.5
DVH300-24-P7-G1 LS AL	Waterproof Driver 300W	220-240	DC24V 12.5A	NO	265×65×39.5

Attention



1. Top bending Series

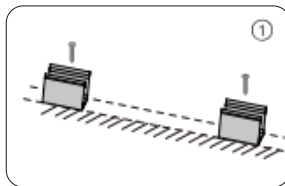
Correct bending way



2. Top bending Series

Correct bending way

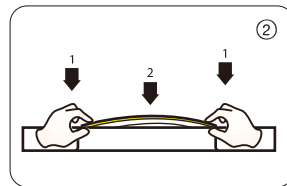
Installation



1. Installation of clip

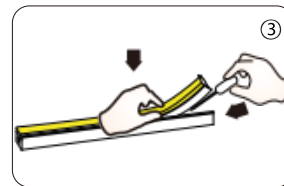
Fix the clips and aluminum profile via the screws

⚠ Suggestion: 2pcs clips per meter.



2. Installation of Neon

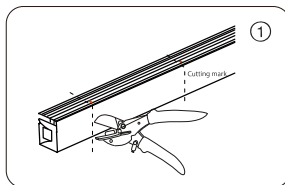
Simultaneously install the neon from both ends



3. Installation of Neon

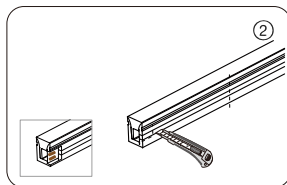
Should use tools to assist when remove the neon

Cutting/Soldering/Intall end cap

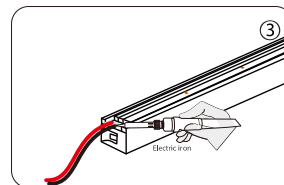


1. Cut the neon to be required length

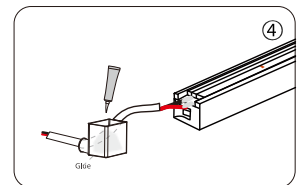
⚠ The minimum cutting unit is based on the cutting mark.



2. Cut the side of neon, expose the soldering pad

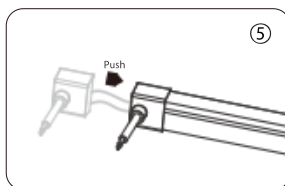


3. Solder the cable onto the PCB



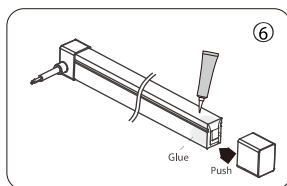
4. Put the wire into and inject glue into the end cap

⚠ The amount of glue is about 1/3-1/2 of end cap



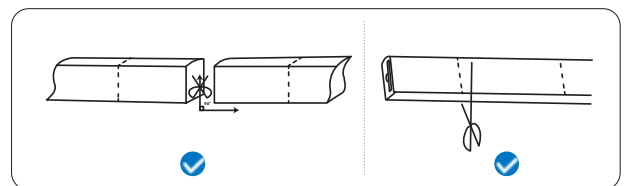
5. Push the end cap to wrap end of neon

⚠ After the glue is injected, the neon needs to be laid flat for 2 hours to before other process.

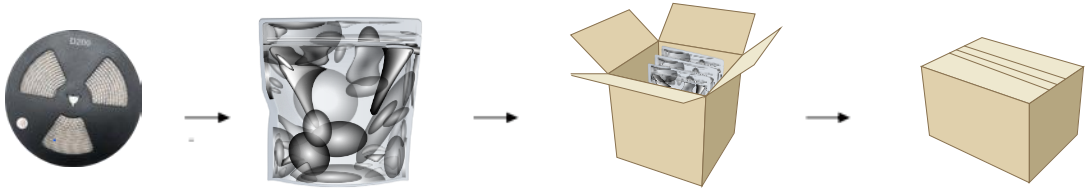


6. Apply gel around the tail of neon and install the end cap

⚠ After the glue is injected, the neon needs to be laid flat for 2 hours to before project process. Glue will complete dry after 24hours.



PACKING				
Box dimension(mm)	Carton dimension(mm)	Electrostatic size(mm)	Reel size(mm)	outer box(bags/carton)
330×320×320	-	400×380	305×100×12	15
Net weight (kg)	Each box net(kg)	Gross weight of each box(kg)	Bag quantity(bags/carton)	
0.82	12.3	12.9	-	



Top View Series 1016 16W 24V Neon Strip

Product No.: FN120S-16W24-1016

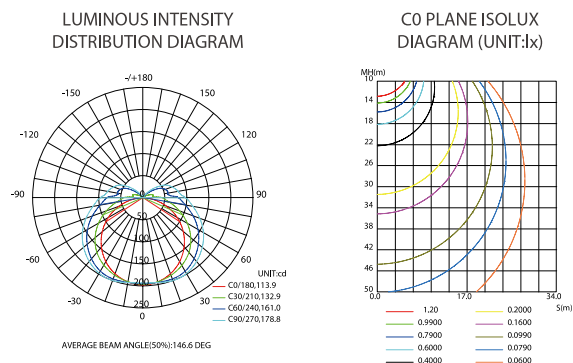
- Extrusion process, lights soft and uniform;
- IP67 protection, easy-to install and convenient connection;



TECHNICAL DETAILS

Product No.	FN120S-16W24-1016
Power	16W/M 4.87W/ft
Voltage	DC24V
CRI	90
Led Qty	120LEDs/M
Length/Reel	5M
Working Temperature	-25~60°C
Storage Temperature	-30~80°C
Voltage Range	23 ~25V dc
Reverse Voltage	25V dc

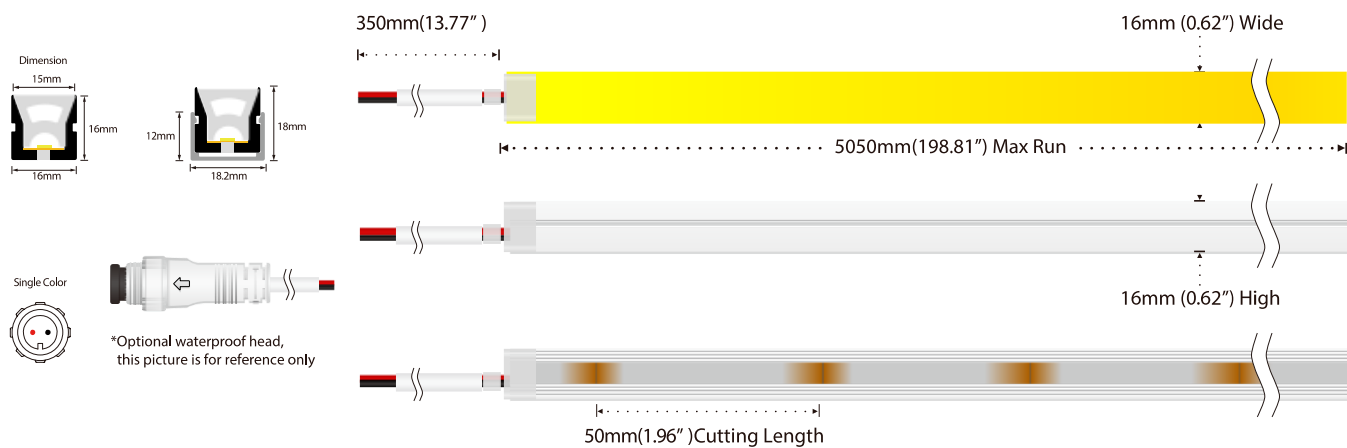
LIGHT DISTRIBUTION



LUMENS PER METER

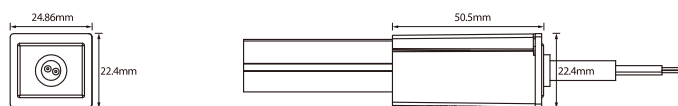
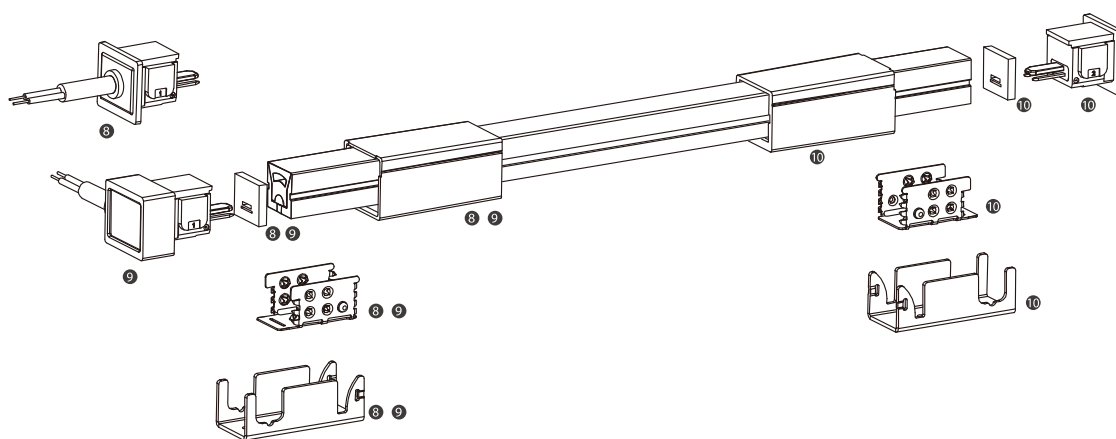
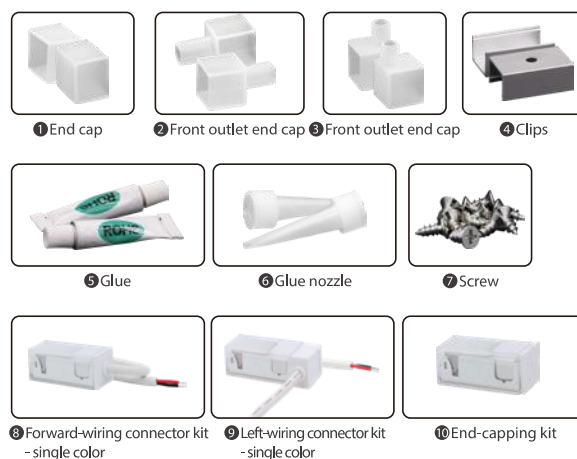
Color Temperature	
2700K	920lm
3000K	940lm
4000K	960lm
6000K	990lm

DIMENSION

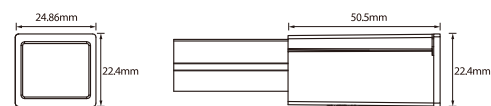


ACCESSORIES SPECIFICATION

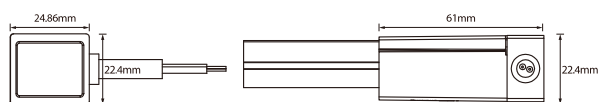
Name	Quantity	Note
① End cap	4pc	
② Front outlet end cap	2pc	
③ Front outlet end cap	-	*Optional
④ Clips	10pc	
⑤ Glue	2pc	
⑥ Glue nozzle	2pc	
⑦ Screw	10pc	
⑧ Forward-wiring connector kit - single color		*Optional
⑨ Left-wiring connector kit - single color		*Optional
⑩ End-capping kit		*Optional



⑧ Forward-wiring connector kit - single color

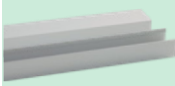
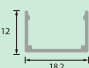



⑩ End-capping kit

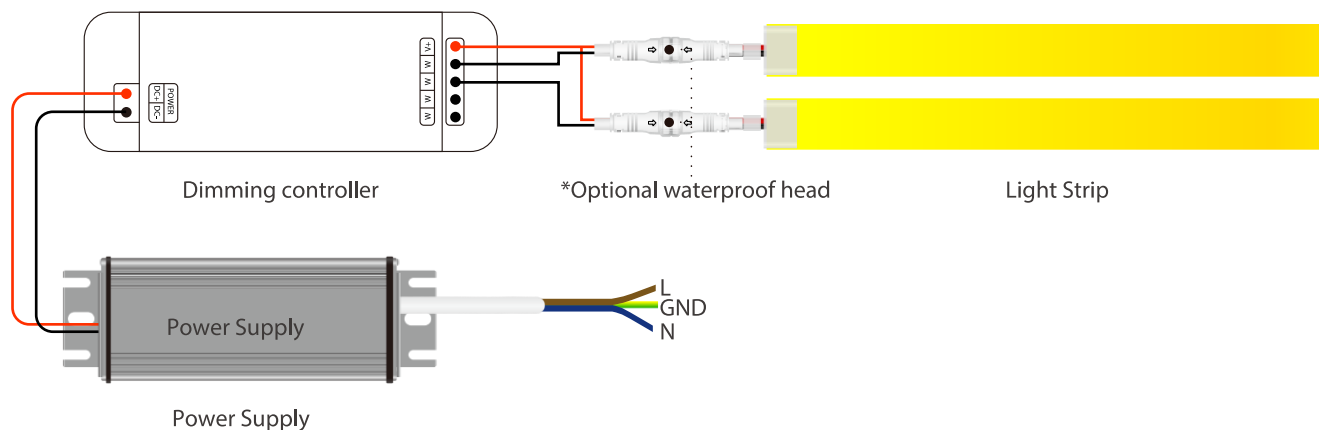


⑨ Left-wiring connector kit - single color

ALUMINUM PROFILE LIST

	Product NO.	Section diagram	install
	18.2x12mm		

POWER CONNECTION DIAGRAM

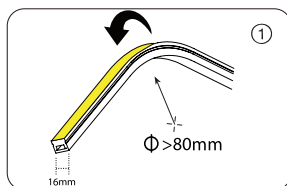


RECOMMENDED POWER SUPPLIES

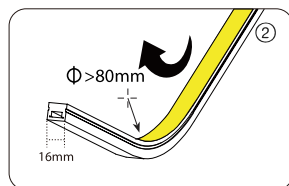
Item Number	Description	Input Voltage	Output Voltage	Dimmable	Dimensions
DVH75-24-P7-G1LS AL	Waterproof Driver 75W	220-240	DC24V 3.12A	NO	165×60×36.5
DVH100-24-P7-G1 LS AL	Waterproof Driver 100W	220-240	DC24V 4.16A	NO	167×60×34.6
DVH150-24-P7-G1 LS AL	Waterproof Driver 150W	220-240	DC24V 6.25A	NO	167×60×34.6
DVH200-24-P7-G1LS AL	Waterproof Driver 200W	220-240	DC24V 8.33A	NO	216×65×39.5
DVH300-24-P7-G1 LS AL	Waterproof Driver 300W	220-240	DC24V 12.5A	NO	265×65×39.5

INSTALL

Attention

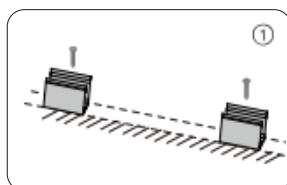


1. Top bending Series
Correct bending way

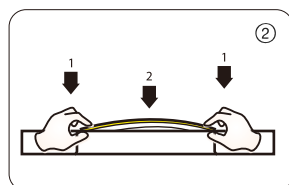


2. Top bending Series
Correct bending way

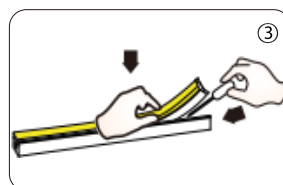
Intallation



1. Installation of clip
Fix the clips and aluminum profile via the screws
Suggestion: 2pcs clips per meter.

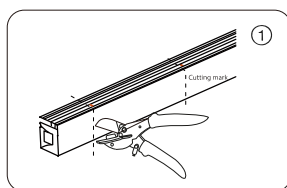


2. Installation of Neon
Simultaneously install the neon from both ends



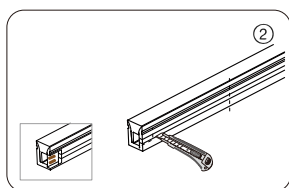
3. Installation of Neon
Should use tools to assist when remove the neon

Cutting/Soldering/Intall end cap

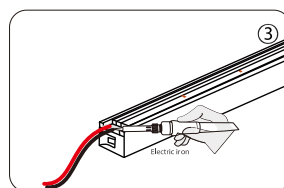


1. Cut the neon to be required length

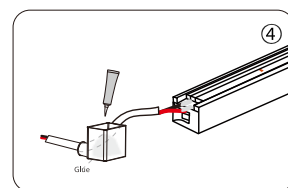
⚠ The minimum cutting unit is based on the cutting mark.



2. Cut the side of neon, expose the soldering pad

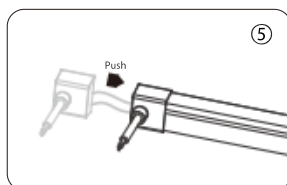


3. Solder the cable onto the PCB



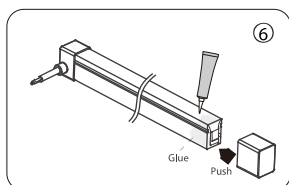
4. Put the wire into and inject glue into the end cap

⚠ The amount of glue is about 1/3-1/2 of end cap



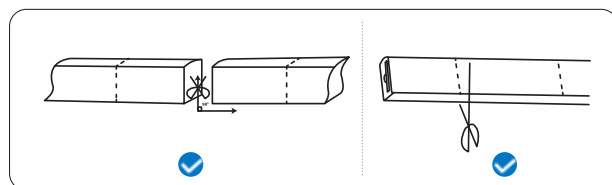
5. Push the end cap to wrapp end of neon

⚠ After the glue is injected, the neon needs to be laid flat for 2 hours to before other process.



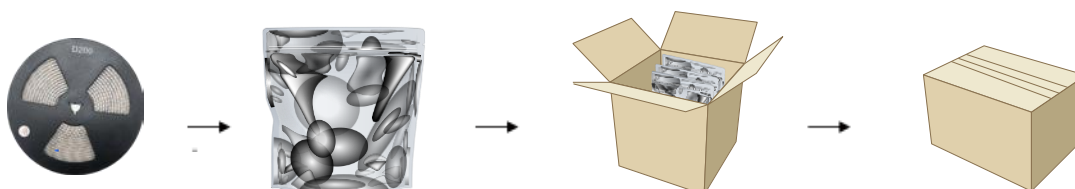
6. Apply gel around the tail of neon and install the end cap

⚠ After the glue is injected, the neon needs to be laid flat for 2 hours to before project process. Glue will complete dry after 24hours.



PACKING

Box dimension(mm)	Carton dimension(mm)	Electrostatic size(mm)	Reel size(mm)	outer box(bags/carton)
400×320×400	-	450×500	380×100×22	10
Net weight (kg)	Each box net(kg)	Gross weight of each box(kg)	Bag quantity(bags/carton)	
1.94	19.4	20.26	-	





Side View Series 1018 14.4W 24V Neon Strip

Product No.: FN120S-14W24-1018

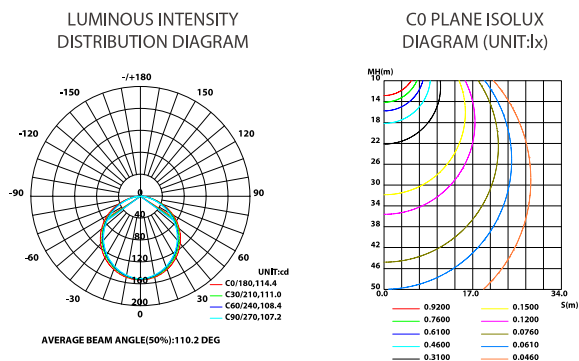
- Extrusion process, lights soft and uniform;
- IP67 protection, easy-to install and convenient connection;



TECHNICAL DETAILS

Product No.	FN120S-14W24-1018
Power	14.4W/M 4.39W/ft
Voltage	DC24V
CRI	90
Led Qty	120LEDs/M
Length/Reel	5M
Working Temperature	-25~60°C
Storage Temperature	-30~80°C
Voltage Range	23 ~25V dc
Reverse Voltage	25V dc

LIGHT DISTRIBUTION

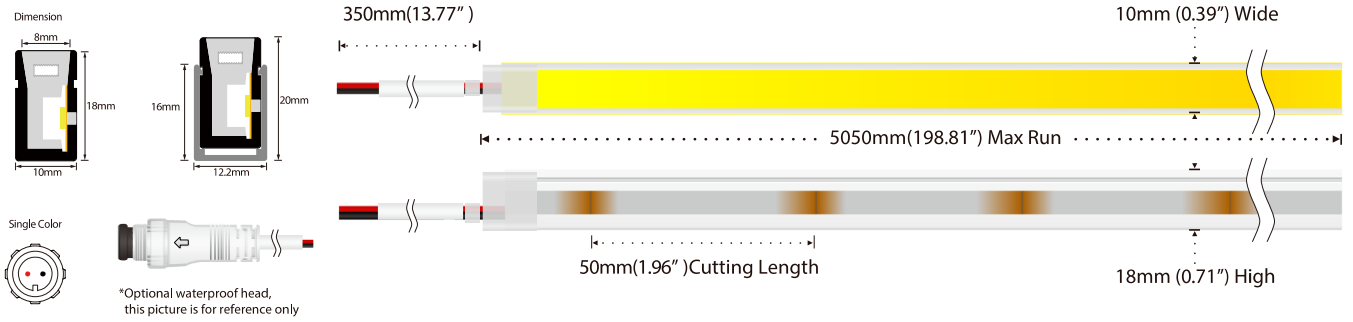


LUMENS PER METER

Color Temperature

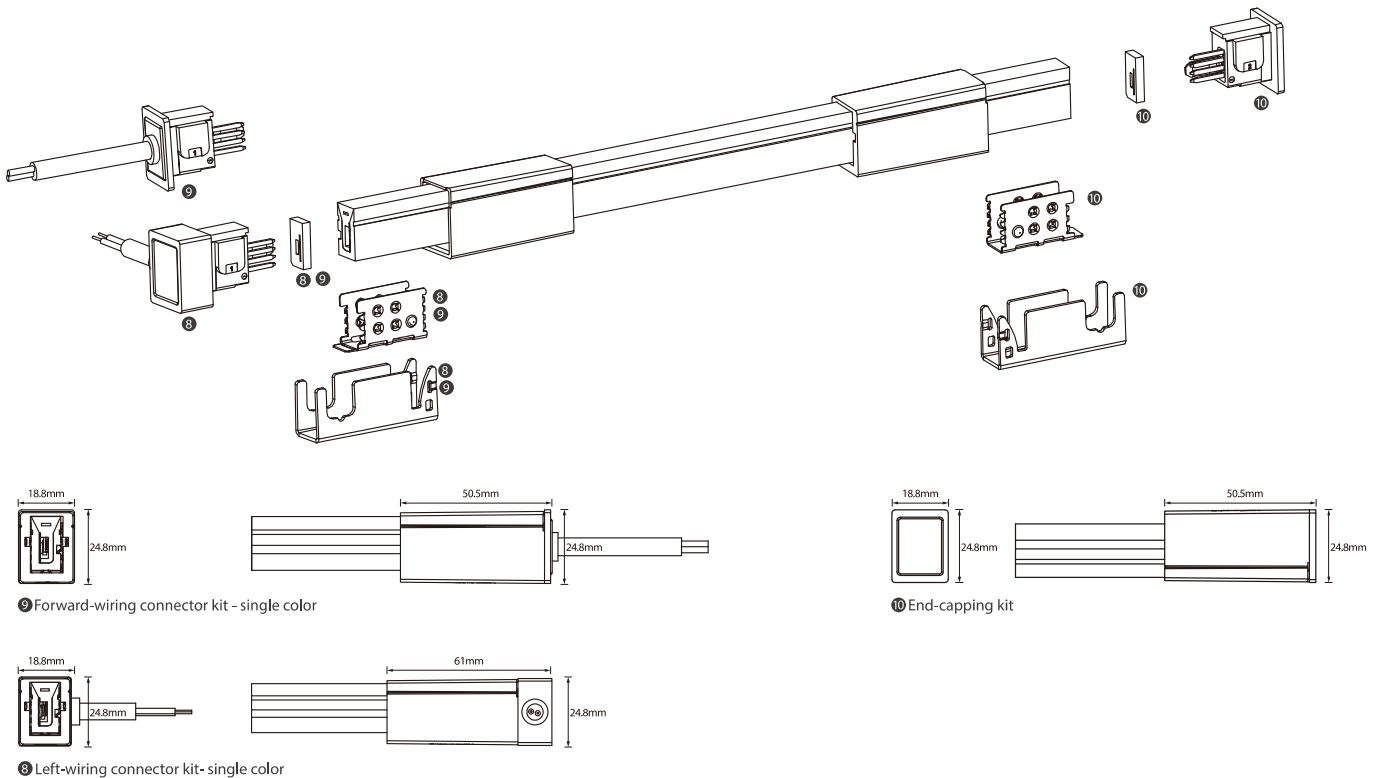
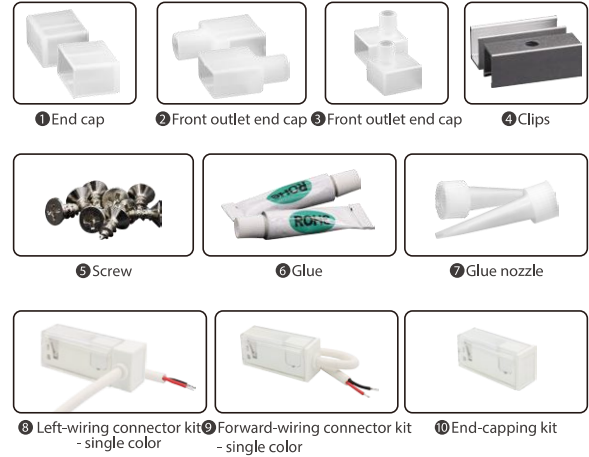
2200K	370lm
2400K	430lm
2700K	450lm
3000K	460lm
4000K	470lm
6000K	460lm

DIMENSION



ACCESSORIES SPECIFICATION

Name	Quantity	Note
① End cap	4pc	
② Front outlet end cap	2pc	
③ Front outlet end cap	-	*Optional
④ Clips	10pc	
⑤ Screw	10pc	
⑥ Glue	2pc	
⑦ Glue nozzle	2pc	
⑧ Left-wiring connector kit - dual color		*Optional
⑨ Forward-wiring connector kit - dual color		*Optional
⑩ End-capping kit		*Optional

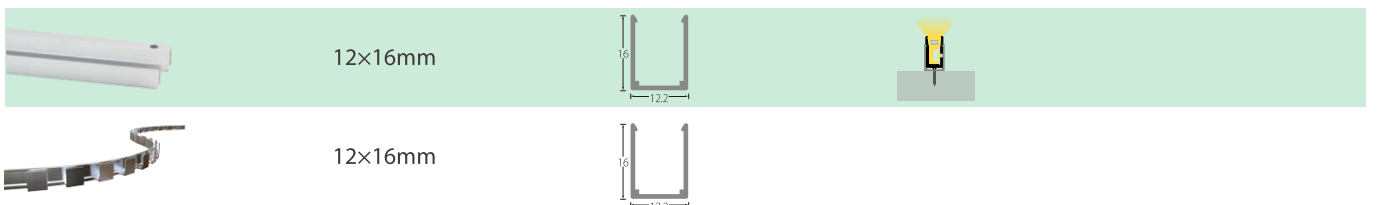


ALUMINUM PROFILE LIST

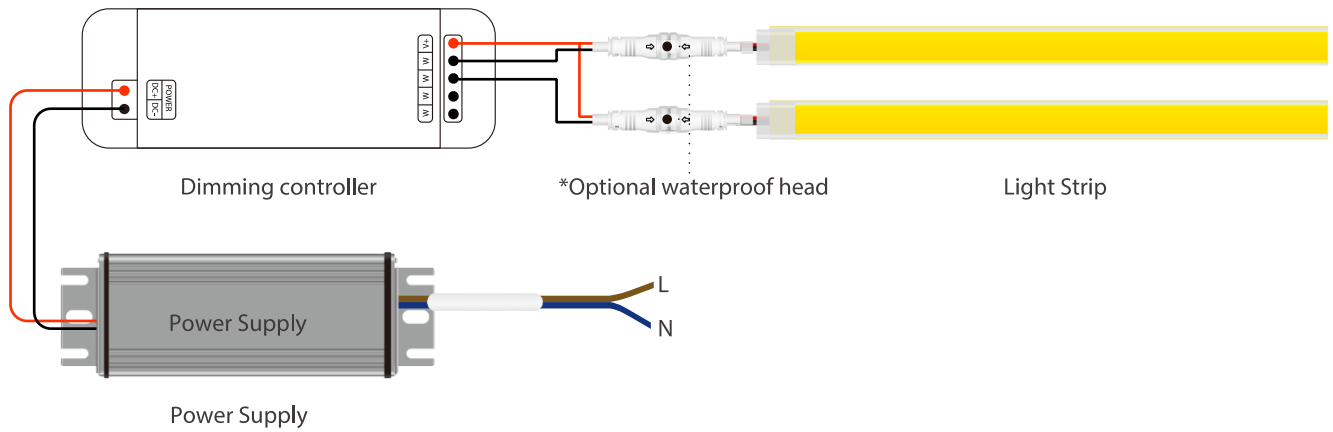
Product NO.

Section diagram

install



POWER CONNECTION DIAGRAM

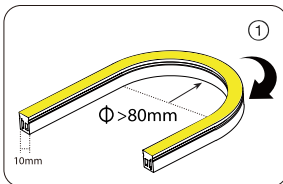


RECOMMENDED POWER SUPPLIES

Item Number	Description	Input Voltage	Output Voltage	Dimmable	Dimensions
DVH75-24-P7-G1LS AL	Waterproof Driver 75W	220-240	DC24V 3.12A	NO	165×60×36.5
DVH100-24-P7-G1 LS AL	Waterproof Driver 100W	220-240	DC24V 4.16A	NO	167×60×34.6
DVH150-24-P7-G1 LS AL	Waterproof Driver 150W	220-240	DC24V 6.25A	NO	167×60×34.6
DVH200-24-P7-G1LS AL	Waterproof Driver 200W	220-240	DC24V 8.33A	NO	216×65×39.5
DVH300-24-P7-G1 LS AL	Waterproof Driver 300W	220-240	DC24V 12.5A	NO	265×65×39.5

INSTALL

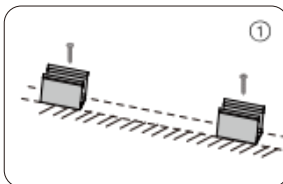
Attention



1. Correct bending way

Luminous surface width < 10mm
Side bending Series

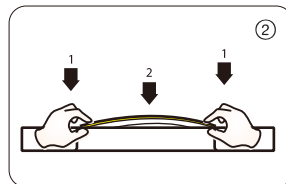
Intallation



1. Installation of clip

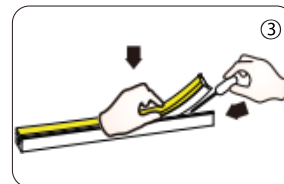
Fix the clips and aluminum profile via the screws

⚠ Suggestion: 2pcs clips per meter.



2. Installation of Neon

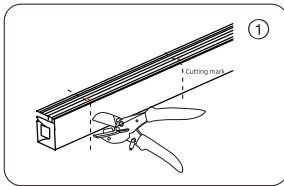
Simultaneously install the neon from both ends



3. Installation of Neon

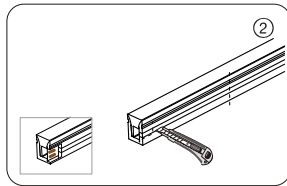
Should use tools to assist when remove the neon

Cutting/Soldering/Intall end cap

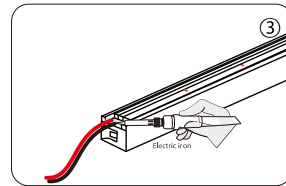


1. Cut the neon to be required length

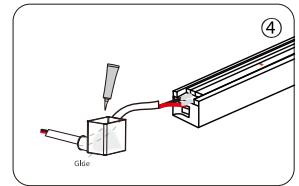
⚠ The minimum cutting unit is based on the cutting mark.



2. Cut the side of neon, expose the soldering pad

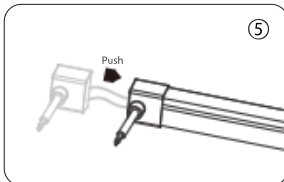


3. Solder the cable onto the PCB



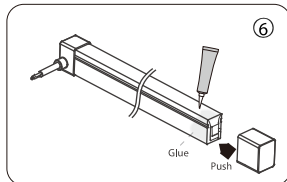
4. Put the wire into and inject glue into the end cap

⚠ The amount of glue is about 1/3-1/2 of end cap



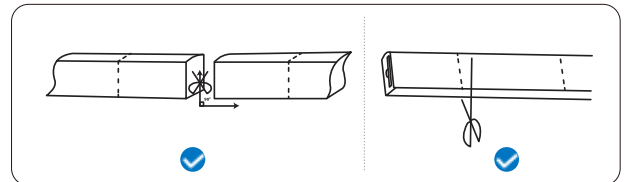
5. Push the end cap to wrap end of neon

⚠ After the glue is injected, the neon needs to be laid flat for 2 hours to before other process.



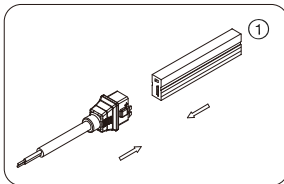
6. Apply gel around the tail of neon and install the end cap

⚠ After the glue is injected, the neon needs to be laid flat for 2 hours to before project process. Glue will complete dry after 24 hours.

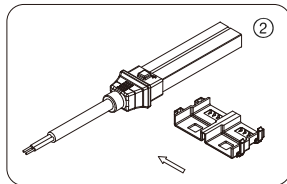


Installation of No-Soldering Connector

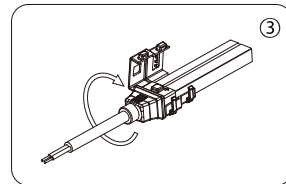
1. Installation of power cord connector



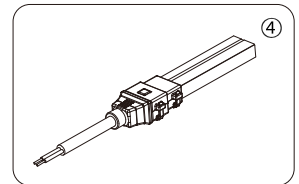
1. Push Neon into the connector



2. Wrap the connector with the faster

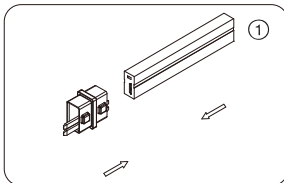


3. Press the fastener, let the bayonet slid into the corresponding slot

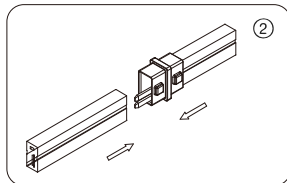


4. Check if nstallation is firm & in place

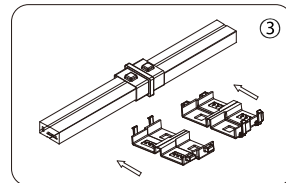
2. Installation of connector



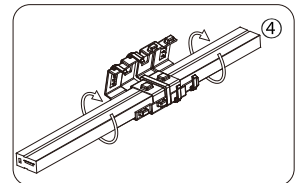
1. Push 1st part neon into the connector



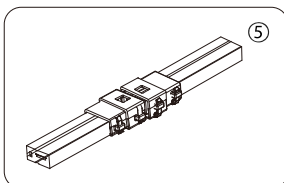
2. Push 2nd strip light part into another end



3. Wrap the both sides of connector with the fastener



4. Press the fastener, let the bayonet slid into the corresponding slot



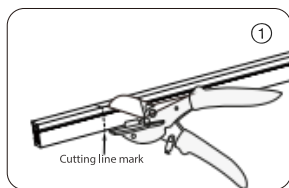
1. Check if installation is firm&in place



Note: We need to add glue to make the connection waterpr oof.

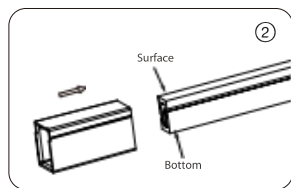
Neon Solderless Terminal Installation Instructions

1、Installation Instructions



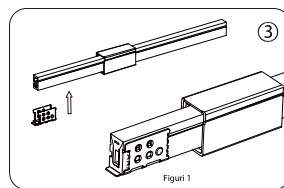
1. Preparation before installation: Cut neon strip

- ⚠ The cutting to be aligned the cutting line and the cutting cuts should be flat;
- ⚠ The PCB backing silk print lines need to be cut completely to avoid leaving the silk print line insulation to cause connection failure.



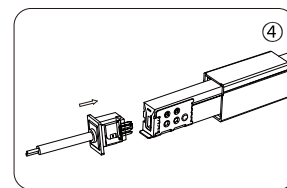
2. Put on transparent PC Cover

- ⚠ The screen print direction on the bottom of the PC Cover is aligned with the bottom of the neon light, as arrow direction.



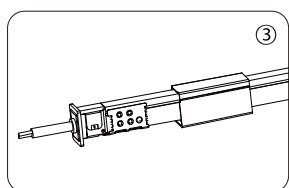
3. Install the stainless steel inner clips

- ⚠ Open the inner clips slightly to fit the neon strip, the end of the neon is about 1-2mm away from the edge of the inner clips. (figure 1)



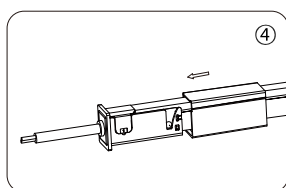
4. Push the end connector (with or without wire) into the neon strip

- ⚠ To check whether the waterproof silicone is flat and aligned, and the cut corner is opposite to the negative terminal of the end connector;
- ⚠ lit test after installation.



3. Inner clips installation

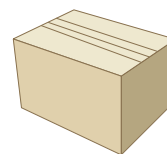
- ⚠ Align the left end connector and the right ending of the inner clips with the middle stainless steel clips, and push into the middle stainless steel clips.



4. Install the transparent PC outer clips; tighten the outer clips as shown in the figure

PACKING

Box dimension(mm)	Carton dimension(mm)	Electrostatic size(mm)	Reel size(mm)	outer box(bags/carton)
330×320×330	-	380×380	305×100×22	10
Net weight (kg)	Each box net(kg)	Gross weight of each box(kg)	Bag quantity(bags/carton)	
1.3	13	13.66	-	

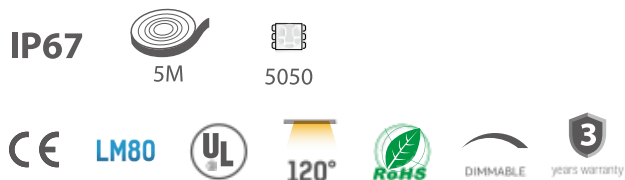




Side View Series 1018 14.4W 24V RGBW Neon Strip

Product No.: FN60RGB-14W24-1018

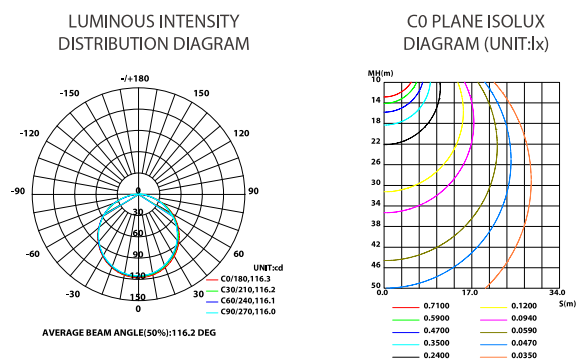
- Extrusion process, lights soft and uniform;
- IP67 protection, easy-to install and convenient connection;



TECHNICAL DETAILS

Product No.	FN60RGB-14W24-1018
Power	14.4W/M 4.39W/ft
Voltage	DC24V
CRI	80
Led Qty	60LEDs/M
Length/Reel	5M
Working Temperature	-25~60°C
Storage Temperature	-30~80°C
Voltage Range	23 ~25V dc
Reverse Voltage	25V dc

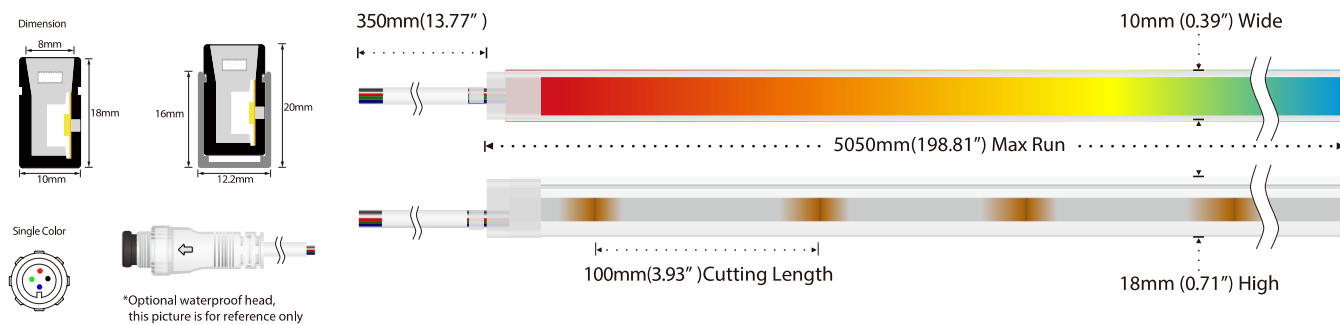
LIGHT DISTRIBUTION



LUMENS PER METER

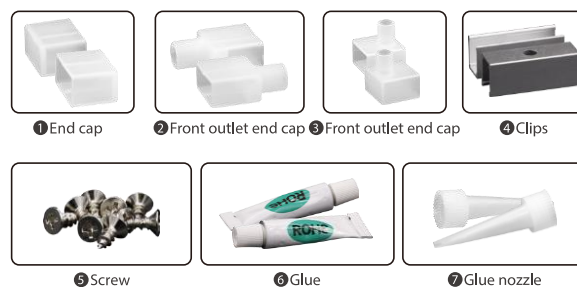
Color Temperature	
3000K	165lm
4000K	180lm
6000K	160lm
R	60lm
G	160lm
B	40lm

DIMENSION



ACCESSORIES SPECIFICATION

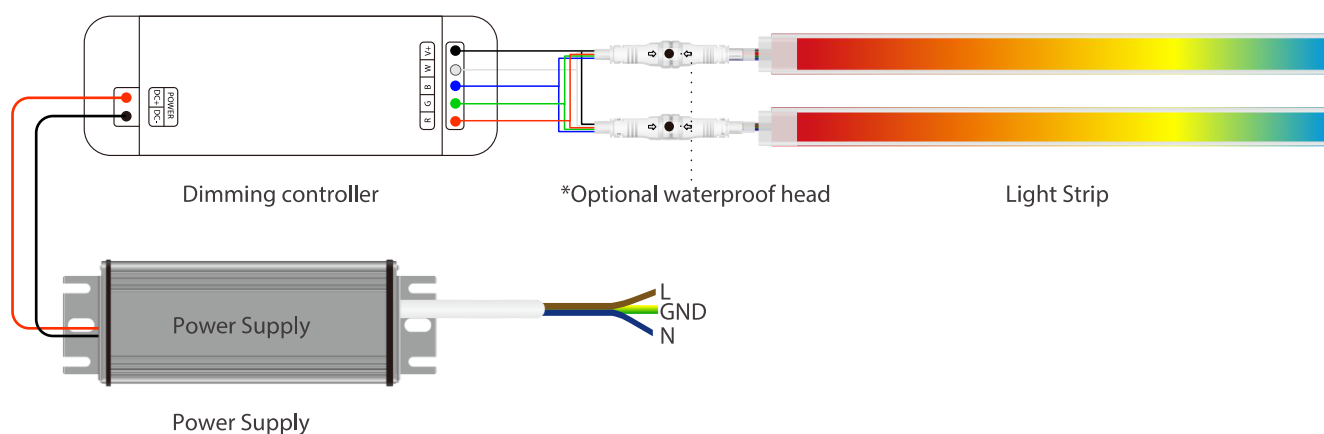
Name	Quantity	Note
① End cap	4pc	
② Front outlet end cap	2pc	
③ Front outlet end cap	-	*Optional
④ Clips	10pc	
⑤ Screw	10pc	
⑥ Glue	2pc	
⑦ Glue nozzle	2pc	



ALUMINUM PROFILE LIST

Product NO.	Section diagram	install
12×16mm		
12×16mm		

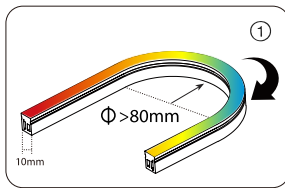
POWER CONNECTION DIAGRAM



RECOMMENDED POWER SUPPLIES

Item Number	Description	Input Voltage	Output Voltage	Dimmable	Dimensions
DVH75-24-P7-G1LS AL	Waterproof Driver 75W	220-240	DC24V 3.12A	NO	165×60×36.5
DVH100-24-P7-G1 LS AL	Waterproof Driver 100W	220-240	DC24V 4.16A	NO	167×60×34.6
DVH150-24-P7-G1 LS AL	Waterproof Driver 150W	220-240	DC24V 6.25A	NO	167×60×34.6
DVH200-24-P7-G1LS AL	Waterproof Driver 200W	220-240	DC24V 8.33A	NO	216×65×39.5
DVH300-24-P7-G1 LS AL	Waterproof Driver 300W	220-240	DC24V 12.5A	NO	265×65×39.5

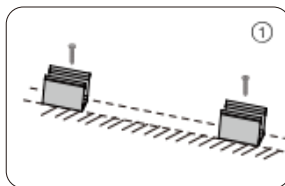
Attention



1. Correct bending way

Luminous surface width < 10mm
Side bending Series

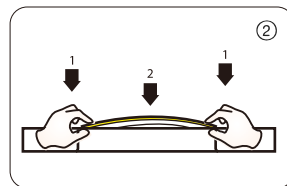
Installation



1. Installation of clip

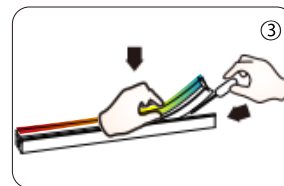
Fix the clips and aluminum profile via the screws

⚠ Suggestion: 2pcs clips per meter.



2. Installation of Neon

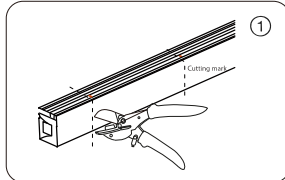
Simultaneously install the neon from both ends



3. Installation of Neon

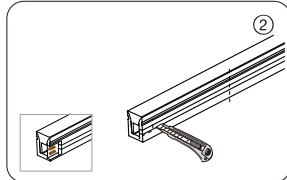
Should use tools to assist when remove the neon

Cutting/Soldering/Intall end cap

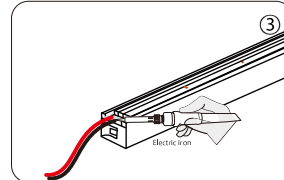


1. Cut the neon to be required length

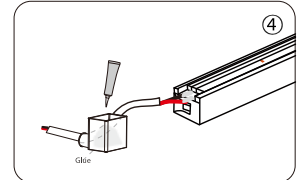
⚠ The minimum cutting unit is based on the cutting mark.



2. Cut the side of neon, expose the soldering pad

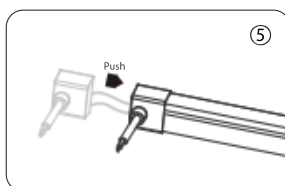


3. Solder the cable onto the PCB



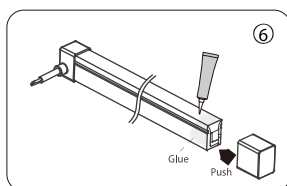
4. Put the wire into and inject glue into the end cap

⚠ The amount of glue is about 1/3-1/2 of end cap



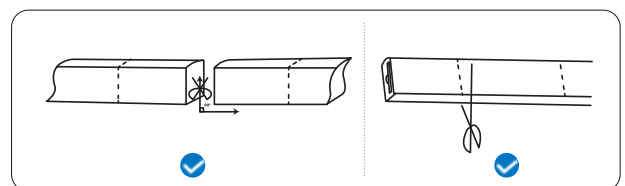
5. Push the end cap to wrap end of neon

⚠ After the glue is injected, the neon needs to be laid flat for 2 hours to before other process.



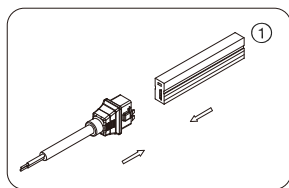
6. Apply gel around the tail of neon and install the end cap

⚠ After the glue is injected, the neon needs to be laid flat for 2 hours to before project process. Glue will complete dry after 24hours.

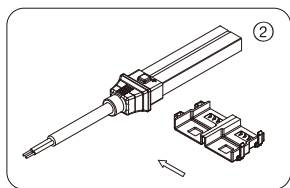


Installation of No-Soldering Connector

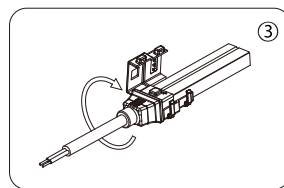
1. Installation of power cord connector



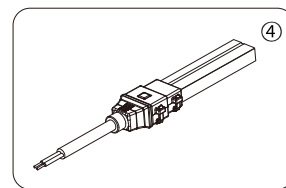
1. Push Neon into the connector



2. Wrap the connector with the faster

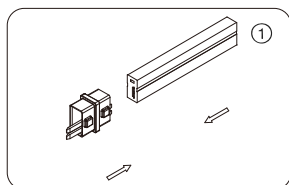


3. Press the fastener, let the bayonet slid into the corresponding slot

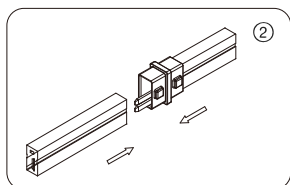


4. Check if nstallation is firm & in place

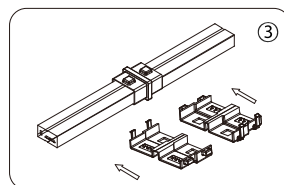
2. Installation of connector



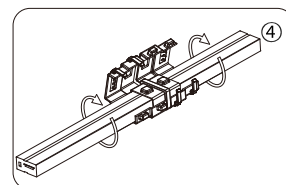
1. Push 1st part neon into the connector



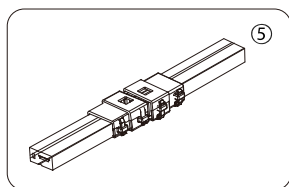
2. Push 2nd strip light part into another end



3. Wrap the both sides of connector with the fastener



4. Press the fastener, let the bayonet slid into the corresponding slot



1. Check if installation is firm&in place



Note: We need to add glue to make the connection waterpr oof.

PACKING

Box dimension(mm)	Carton dimension(mm)	Electrostatic size(mm)	Reel size(mm)	outer box(bags/carton)
330×320×330	-	380×380	305×100×22	10
Net weight (kg)	Each box net(kg)	Gross weight of each box(kg)	Bag quantity(bags/carton)	
1.3	13	13.66	-	

